



# MOON

## Downlight

### Flat



Ø 140mm (Φ125)



Ø 180mm (Φ160)



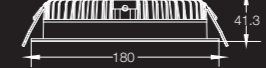
Ø 220mm (Φ190)

Power	11W 15W	11W 15W 20W 23W	20W 23W 30W
Lumen Output	935lm 1275lm	1067lm 1241lm 1693lm 1776lm	1805lm 1832lm 2621lm
Beam Angles	90°	90°	90°
Colour Temperature	2700K   3000K   4000K   5000K	2700K   3000K   4000K   5000K	2700K   3000K   4000K   5000K
CRI	82+   92+	82+   92+	82+   92+

### Deep



Ø 140mm (Φ125)

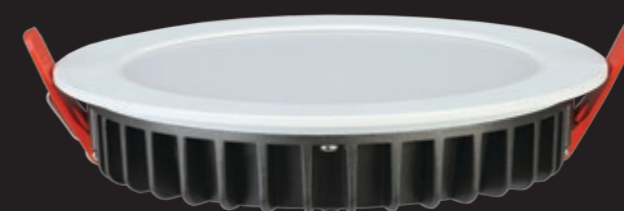


Ø 180mm (Φ160)



Ø 220mm (Φ190)

Power	11W 15W	15W 20W 23W	20W 23W 30W
Lumen Output	935lm 1275lm	1241lm 1693lm 1776lm	1805lm 1832lm 2621lm
Beam Angles	90°	90°	90°
Colour Temperature	2700K   3000K   4000K   5000K	2700K   3000K   4000K   5000K	2700K   3000K   4000K   5000K
CRI	82+   92+	82+   92+	82+   92+



Flat



Deep

#### Finishes

UV Textured White

IP 20

3yr Warranty

Dimmable

## MOON Downlight

Slim Round Downlight with 3 High Features: High efficiency, reach 100lm/w; High brightness, stable flux; High value, widely used and ensuring your high taste demands.

#### General Specifications

Material | Powder Coated Aluminium

Lifetime | >60,000h L70

Colour Deviation | SDCM≤3

Different dimming

Excellent thermal management

#### Driver

Power Factor | >0.80 >0.90

240V Remote PC Dimmable Driver

Dimming Type | DALI, TRIAC, 1-10V

#### Notes

- Different wattage can be provided upon request
- Customization for non-standard solutions in terms of light source, color, length and other specifications.

